

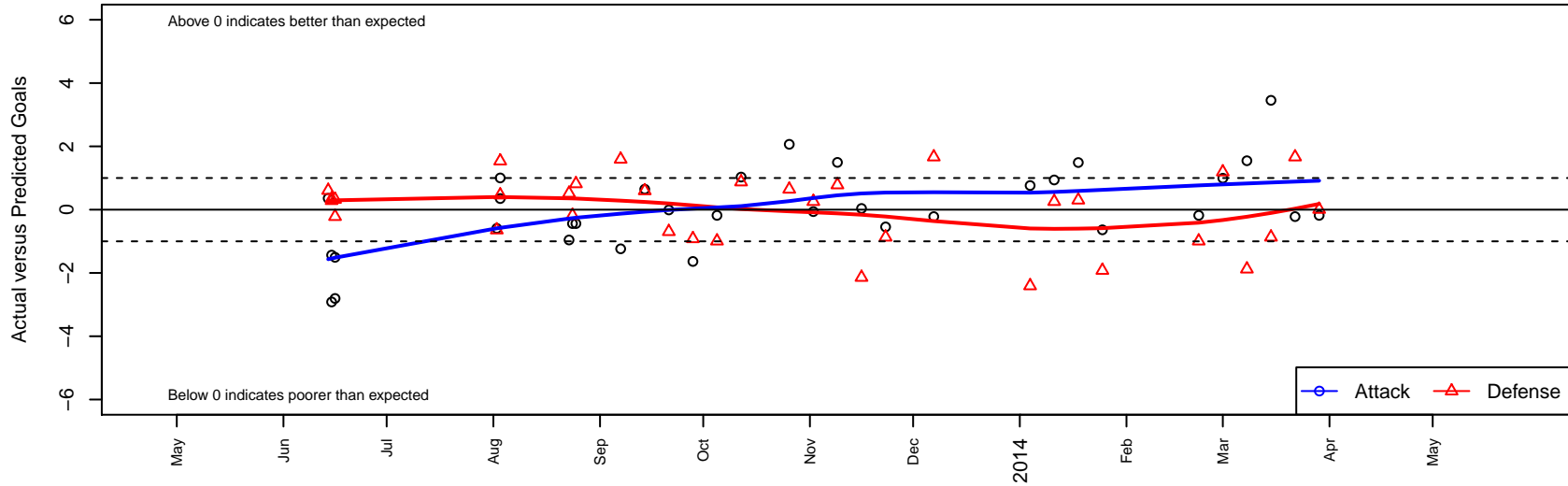
MIFC Maroon G00

Mercer Island FC
 Mercer Island, WA
 G00 total strength=845
 attack=1.66 defense=0.82
 fall league = NPSL G13D1, NPSL Spr G13D1M
 notes= Hill 2013
 alt names used:
 MIFC Maroon '00
 GU13 MIFC Maroon
 MIFC Maroon GU13
 MI FC Maroon 00 384/Hill
 MIFC Maroon

Venues played:
 Shoreline Classic GU12-13 Silver
 Blast Off GU13-14 A
 Sky River GU13
 NPSL G13D1
 Founders Cup G00
 NPSL Spr G13D1M



MIFC Maroon G00
 Dots are actual minus expected GF (blue circles) and GA (red triangles).
 Blue line is smoothed change in attack strength. Red is smoothed change in defense strength.



	date	home		away		venue	pred.home	pred.away
11719	2014-03-29	Crossfire Select Habash G00	1	MIFC Maroon G00	1	NPSL Spr G13D1M	1.01	1.18
11681	2014-03-22	MIFC Maroon G00	1	Lake Hills Pumas G00	0	NPSL Spr G13D1M	1.22	1.66
11594	2014-03-15	BIFC Blue G00	3	MIFC Maroon G00	5	NPSL Spr G13D1M	2.13	1.55
11506	2014-03-08	MIFC Maroon G00	3	Whatcom FC Rangers White G00	3	NPSL Spr G13D1M	1.45	1.12
11415	2014-03-01	Crossfire Select Barnes G99	0	MIFC Maroon G00	2	NPSL Spr G13D1M	1.19	1.01
11336	2014-02-22	MIFC Maroon G00	1	Crossfire Select Habash G00	2	NPSL Spr G13D1M	1.18	1.01
11172	2014-01-25	MIFC Maroon G00	1	Newport FC G00	3	Founders Cup G00	1.64	1.08
11118	2014-01-18	MIFC Maroon G00	7	ISC Arsenal Red G00	0	Founders Cup G00	5.51	0.30
11081	2014-01-11	Seattle United Shoreline Blue G00	1	MIFC Maroon G00	2	Founders Cup G00	1.26	1.06
11057	2014-01-04	Crossfire Select Metzger G00	4	MIFC Maroon G00	2	Founders Cup G00	1.59	1.24
11035	2013-12-07	Lake Hills Pumas G00	0	MIFC Maroon G00	1	NPSL G13D1	1.66	1.22
10878	2013-11-23	MIFC Maroon G00	1	BIFC Blue G00	3	NPSL G13D1	1.55	2.13
10782	2013-11-16	FME Rage G00	5	MIFC Maroon G00	1	NPSL G13D1	2.86	0.96
10674	2013-11-09	MIFC Maroon G00	3	SCORE Rockets G00	0	NPSL G13D1	1.51	0.78
10528	2013-11-02	Seattle United Shoreline Blue G00	1	MIFC Maroon G00	1	NPSL G13D1	1.26	1.06
10371	2013-10-26	MIFC Maroon G00	4	Seattle United NE Blue G00	0	NPSL G13D1	1.93	0.65
10028	2013-10-12	MIFC Maroon G00	2	Kent United Green G00	1	NPSL G13D1	0.97	1.88
9846	2013-10-05	Crossfire Select Habash G00	2	MIFC Maroon G00	1	NPSL G13D1	1.01	1.18
9672	2013-09-28	Newport FC G00	2	MIFC Maroon G00	0	NPSL G13D1	1.08	1.64
9523	2013-09-21	MIFC Maroon G00	1	Seattle United S Blue G00	2	NPSL G13D1	1.01	1.31
9358	2013-09-14	MIFC Maroon G00	2	FC Edmonds Crew G00	1	NPSL G13D1	1.35	1.60
9193	2013-09-07	Crossfire Select Metzger G00	0	MIFC Maroon G00	0	NPSL G13D1	1.59	1.24
9072	2013-08-25	MIFC Maroon G00	1	CSC Velocity Green G00	0	Sky River GU13	1.44	0.82
9032	2013-08-24	MIFC Maroon G00	1	CSC Velocity Green G00	1	Sky River GU13	1.44	0.82
8982	2013-08-23	Orting FC -Unk G00	0	MIFC Maroon G00	1	Sky River GU13	0.52	1.96
12727	2013-08-03	WPFC Fury White G00	1	MIFC Maroon G00	2	Blast Off GU13-14 A	1.46	1.65
12729	2013-08-03	MIFC Maroon G00	2	Snohomish United Black G99	0	Blast Off GU13-14 A	1.00	1.54
12672	2013-08-02	MIFC Maroon G00	0	Whatcom FC Rangers Blue G99	3	Blast Off GU13-14 A	0.59	2.36

	date	home		away		venue	pred.home	pred.away
8005	2013-06-16	MIFC Maroon G00	1	Seattle United S Black G01	0	Shoreline Classic GU12-13 Silver	3.81	0.33
8007	2013-06-16	MIFC Maroon G00	0	SCORE Rockets G00	1	Shoreline Classic GU12-13 Silver	1.51	0.78
7959	2013-06-15	Seattle United NE Blue G01	0	MIFC Maroon G00	5	Shoreline Classic GU12-13 Silver	0.29	7.92
7962	2013-06-15	Seattle United Shoreline Blue G01	0	MIFC Maroon G00	5	Shoreline Classic GU12-13 Silver	0.34	6.44
7931	2013-06-14	MIFC Maroon G00	5	Seattle United NE White G00	0	Shoreline Classic GU12-13 Silver	4.64	0.61